

S R L



INVESTOR IN PEOPLE

Technical Report

Ref Number **C09/5L/20941/R01**

Date **20 October 2009**

Project

**The Laboratory Determination of
The Airborne Sound Transmission
Of a Wall with Sockets and Putty Pads**

Prepared for

**Everbuild Building Products Ltd
Site 41
Knowsthorpe Way
Cross Green Industrial Estate
Leeds
LS9 0SW**

By

Allen Smalls



0444

Sound Research Laboratories Limited

Specialist Consultants: Acoustics – BREEAM – Fire – Air leakage

Head Office & Laboratory:

Holbrook House, Little Waldingfield, Sudbury, Suffolk CO10 0TH

Tel: +44(0)1787 247595 Fax: +44(0)1787 248420

e-mail: srl@soundresearch.co.uk

1.0 Summary

Tests have been done in SRL's Laboratory at Holbrook House, Sudbury, Suffolk, to determine the sound reduction index of a wall with sockets and putty pads in it, in accordance with BS EN ISO 140-3:1995.

From these measurements the required results have been derived and are presented in both tabular and graphic form in Data Sheets 1 to 7.

The results are given in 1/3rd octave bands over the frequency range 50Hz to 10kHz, which is beyond that required by the test standard. Measurements outside the standard frequency range are not UKAS accredited.



.....
Allen Smalls

Quality Manager

For and on behalf of

Sound Research Laboratories Limited

Tel: 01787 247595

Email: asmalls@soundresearch.co.uk



.....
Trevor Hickman

Deputy Technical Manager



Contents

1.0 Summary

2.0 Details of Measurements

3.0 Description of Test

4.0 Results

Data Sheets: 1 to 7

Diagram: 1

Appendix 1: Test Procedure

Appendix 2: Measurement Uncertainty

2.0 Details of Measurements

2.1 Location

Sound Research Laboratories Ltd
 Holbrook House
 Little Waldingfield
 Sudbury
 Suffolk
 CO10 0TH

2.2 Test Dates

15 October 2009

2.3 Instrumentation and Apparatus Used

| Make | Description | Type |
|-----------------------|---|---|
| E D I | Microphone Multiplexer Microphone Power Supply Unit | |
| Norwegian Electronics | Real Time Analyser Rotating Microphone Boom | 830 231 |
| Brüel & Kjaer | 12mm Condenser Microphones Windshields Pre Amplifiers Microphone Calibrator Omnipower Sound Source Power Amplifier | 4166 UA0237 2639, 2669C 4231 4296 2716 |
| Larson Davis | 12mm Condenser Microphone | 2560 |
| Celestion | Loudspeakers | 100w |
| Douglas Curtis | Rotating Microphone Boom | |
| Thermo Hygro | Temperature & Humidity Probe | |
| TOA | Graphic Equalizer | E-1231 |
| QSC Audio | Power Amplifier | RMX 1450 |

2.4 References

| | |
|----------------------|--|
| BS EN ISO 140-3:1995 | Laboratory measurement of airborne sound insulation of building elements |
| BS EN ISO 717-1:1997 | Rating of sound insulation in buildings and of building elements. Airborne Sound Insulation. |

2.5 Personnel Present

| | |
|--------------------|-----------|
| Andrew Scanlon | Everbuild |
| Gary Southerington | Everbuild |

3.0 Description of Test

3.1 Description of Sample

A wall was tested with and without holes, sockets and putty pads. Details as follows:

Wall 3.85m wide by 2.94m high. Wall construction:

- 2 x 15mm Knauf Soundshield
- 70mm Knauf metal C stud
- 50mm cavity filled with 50mm thick RS33
- 70mm Knauf metal C stud
- 2 x 15mm Knauf Soundshield

Socket hole dimensions: 135mm wide by 75mm high.

Dry lining box: 2 gang 46mm by DETA, fitted with double electrical socket.

Putty Pads: Everbuild Firespan.

See Diagram 1 for socket/hole positions in wall and wall construction.

Sampling plan: Selected at Random

Sample condition: New

Details supplied by: Everbuild

Sample installed by: Wall: SRL – Other: Everbuild

3.2 Sample Delivery date

15 October 2009

3.3 Test Procedures

The sample was mounted/located and tested in accordance with the relevant standard. The method and procedure is described in Appendix 1. The measurement uncertainty is given in Appendix 2.

4.0 Results

The results of the measurements and subsequent analysis are given in Data Sheets 1 to 7 and summarised below.

Results relate only to the items tested.

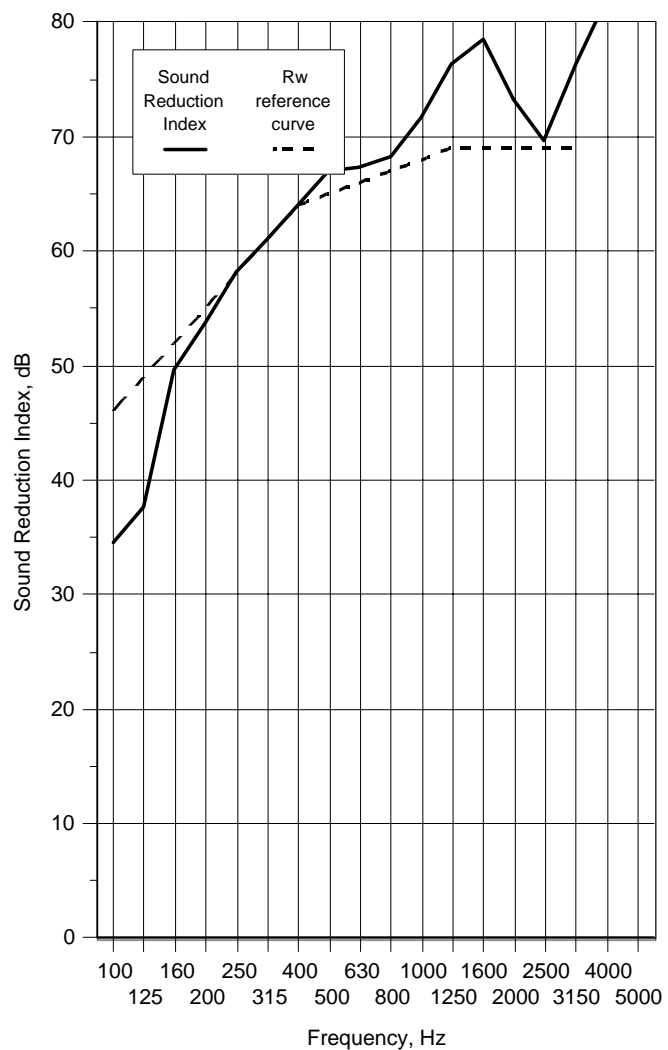
| SRL Test No. | Description in Brief | R _w (C;C _{tr}) |
|--------------|--|-------------------------------------|
| 2 | Wall with no penetrations | 65 (-5;-13) |
| 3 | Wall with one hole | 64 (-6;-13) |
| 5 | Wall with one socket + putty pad | 65 (-6;-13) |
| 6 | Wall with one hole each side of wall (not back to back) | 60 (-5;-12) |
| 7 | Wall with one socket + putty pad each side of wall (not back to back) | 65 (-5;-12) |
| 8 | Wall with two holes on receive side of wall One hole on source side of wall. (Two holes back to back) | 50 (-1;-5) |
| 9 | Wall with two sockets + putty pads on receive side of wall - One socket + putty pad on source side of wall. (Two back to back) | 65 (-6;-13) |

-----*End of Text*-----

Data Sheet 1

| | | | |
|------------------------|---------------------------|------------------------------|------------------------|
| Test Number : | 2 | Air temperature: | 13.2 °C |
| Client: | Everbuild | Air humidity: | 59 % |
| Test Date: | 15/10/2009 | Receiving room volume | 50 m ³ |
| Sample height: | 2.94 m | Source room volume: | 55 m ³ |
| Sample width: | 3.85 m | Sample weight: | 57.7 kg/m ² |
| Product | Wall with no penetrations | | |
| Identification: | | | |

| Freq f Hz | Sound Reduction Index, dB | |
|---------------------|---------------------------------|---------|
| | 1/3 Oct | 1/1 Oct |
| 50+ | 24.1 | 28.2 |
| 63+ | 32.7 | |
| 80+ | 38.2 | |
| 100 | 34.5 | 37.5 |
| 125 | 37.7 | |
| 160 | 49.7 | |
| 200 | 53.9 | 56.7 |
| 250 | 58.2 | |
| 315 | 60.9 | |
| 400 | 64.1 | 65.9 |
| 500 | 67.1 | |
| 630 | 67.4 | |
| 800 | 68.3 | 71.0 |
| 1000 | 71.7 | |
| 1250 | 76.3 | |
| 1600 | 78.5 | 72.4 |
| 2000 | 73.2 | |
| 2500 | 69.6 | |
| 3150 | 76.4 | 79.9 |
| 4000 | 82.0 | |
| 5000 | 87.7 | |
| 6300+ | 92.5 | 78.7 |
| 8000+ | 83.1 * | |
| 10000+ | 74.6 * | |
| Average 100-3150 | 63.0 | |



Rating according to BS EN ISO 717-1:1997

Rw(C;Ctr)= **65 (-5;-13)dB**

Notes * designates measurement corrected for background

designates limit of measurement due to background

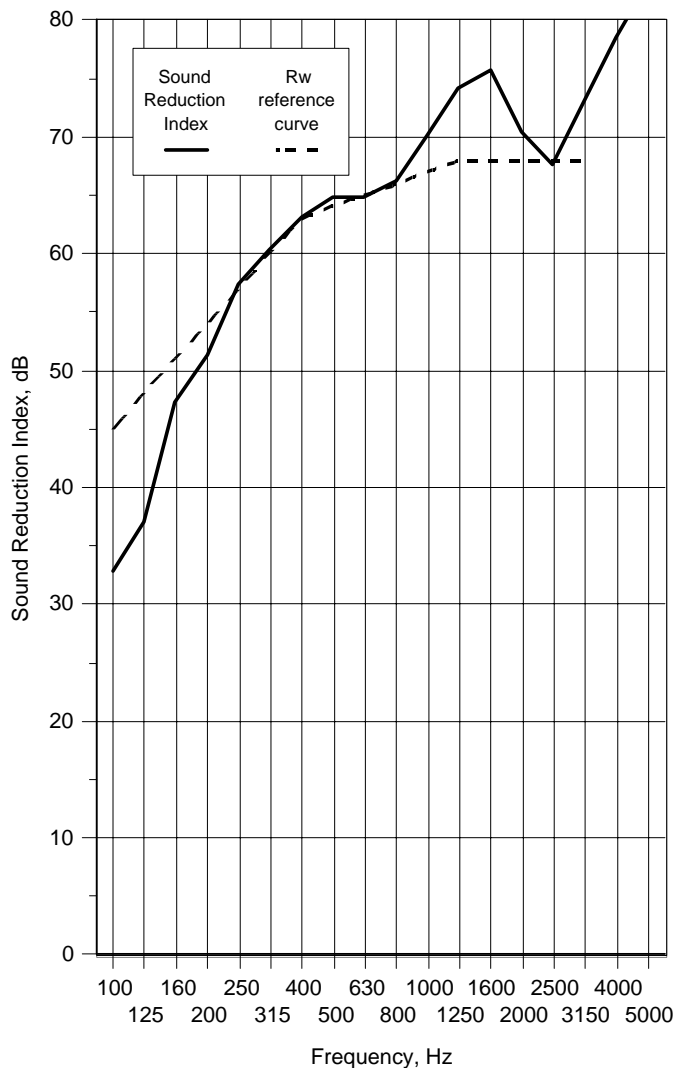
+ designates frequency beyond standard and not UKAS accredited

v1.6

Data Sheet 2

| | | | |
|------------------------|--------------------|------------------------------|------------|
| Test Number : | 3 | Air temperature: | 13.2 °C |
| Client: | Everbuild | Air humidity: | 59 % |
| Test Date: | 15/10/2009 | Receiving room volume | 50 m3 |
| Sample height: | 2.94 m | Source room volume: | 55 m3 |
| Sample width: | 3.85 m | Sample weight: | 57.7 kg/m2 |
| Product | Wall with one hole | | |
| Identification: | | | |

| Freq f Hz | Sound Reduction Index, dB | |
|---------------------|---------------------------------|---------|
| | 1/3 Oct | 1/1 Oct |
| 50+ | 25.0 | 28.8 |
| 63+ | 31.8 | |
| 80+ | 37.7 | |
| 100 | 32.8 | 36.1 |
| 125 | 37.1 | |
| 160 | 47.3 | |
| 200 | 51.4 | 54.8 |
| 250 | 57.4 | |
| 315 | 60.3 | |
| 400 | 63.1 | 64.1 |
| 500 | 64.8 | |
| 630 | 64.8 | |
| 800 | 66.3 | 69.1 |
| 1000 | 70.1 | |
| 1250 | 74.1 | |
| 1600 | 75.7 | 70.1 |
| 2000 | 70.4 | |
| 2500 | 67.6 | |
| 3150 | 73.2 | 76.6 |
| 4000 | 78.5 | |
| 5000 | 83.3 | |
| 6300+ | 88.4 | 79.1 |
| 8000+ | 82.9 * | |
| 10000+ | 75.1 * | |
| Average 100-3150 | 61.0 | |



Rating according to BS EN ISO 717-1:1997

Rw(C;Ctr)= **64 (-6;-13)**dB

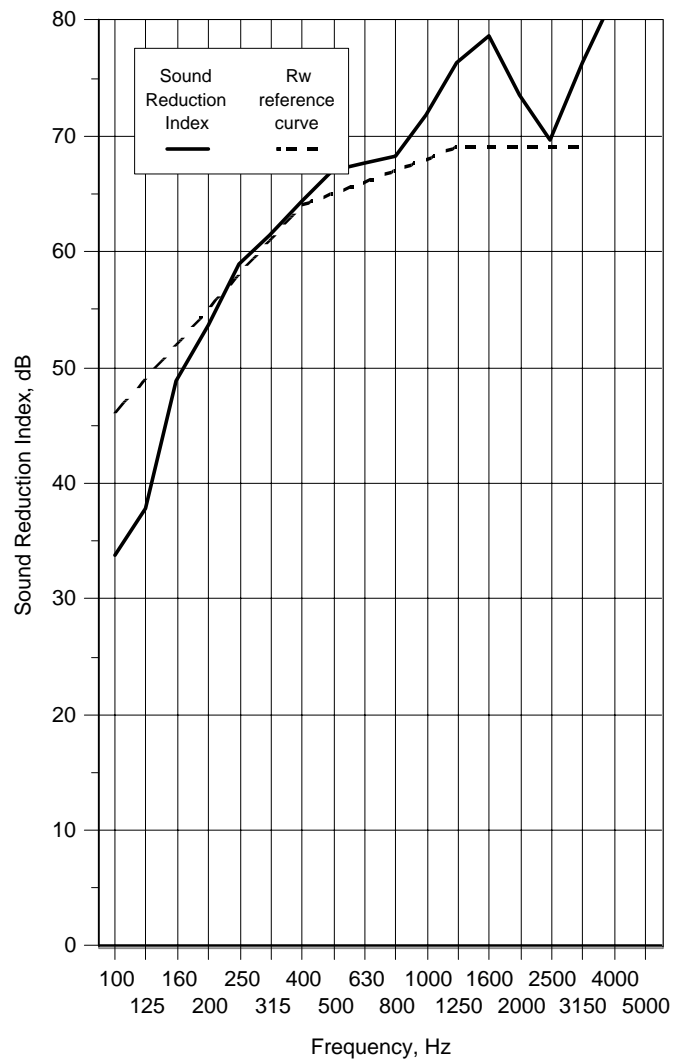
Notes * designates measurement corrected for background
 # designates limit of measurement due to background
 + designates frequency beyond standard and not UKAS accredited

v1.6

Data Sheet 3

| | | | |
|------------------------|--------------------------------|------------------------------|------------|
| Test Number : | 5 | Air temperature: | 13.4 °C |
| Client: | Everbuild | Air humidity: | 59 % |
| Test Date: | 15/10/2009 | Receiving room volume | 50 m3 |
| Sample height: | 2.94 m | Source room volume: | 55 m3 |
| Sample width: | 3.85 m | Sample weight: | 57.7 kg/m2 |
| Product | Wall with one socket+putty pad | | |
| Identification: | | | |

| Freq f Hz | Sound Reduction Index, dB | |
|---------------------|---------------------------------|---------|
| | 1/3 Oct | 1/1 Oct |
| 50+ | 25.6 | 29.4 |
| 63+ | 33.1 | |
| 80+ | 38.3 | |
| 100 | 33.8 | 37.1 |
| 125 | 37.8 | |
| 160 | 48.8 | |
| 200 | 53.6 | 56.7 |
| 250 | 59.0 | |
| 315 | 61.5 | |
| 400 | 64.4 | 66.1 |
| 500 | 67.1 | |
| 630 | 67.6 | |
| 800 | 68.3 | 71.1 |
| 1000 | 71.9 | |
| 1250 | 76.4 | |
| 1600 | 78.7 | 72.6 |
| 2000 | 73.5 | |
| 2500 | 69.7 | |
| 3150 | 76.4 | 79.9 |
| 4000 | 82.0 | |
| 5000 | 87.7 | |
| 6300+ | 92.4 | 78.6 |
| 8000+ | 82.8 * | |
| 10000+ | 74.4 * | |
| Average 100-3150 | 63.0 | |



Rating according to BS EN ISO 717-1:1997

Rw(C;Ctr)= **65 (-6;-13)**dB

Notes * designates measurement corrected for background

designates limit of measurement due to background

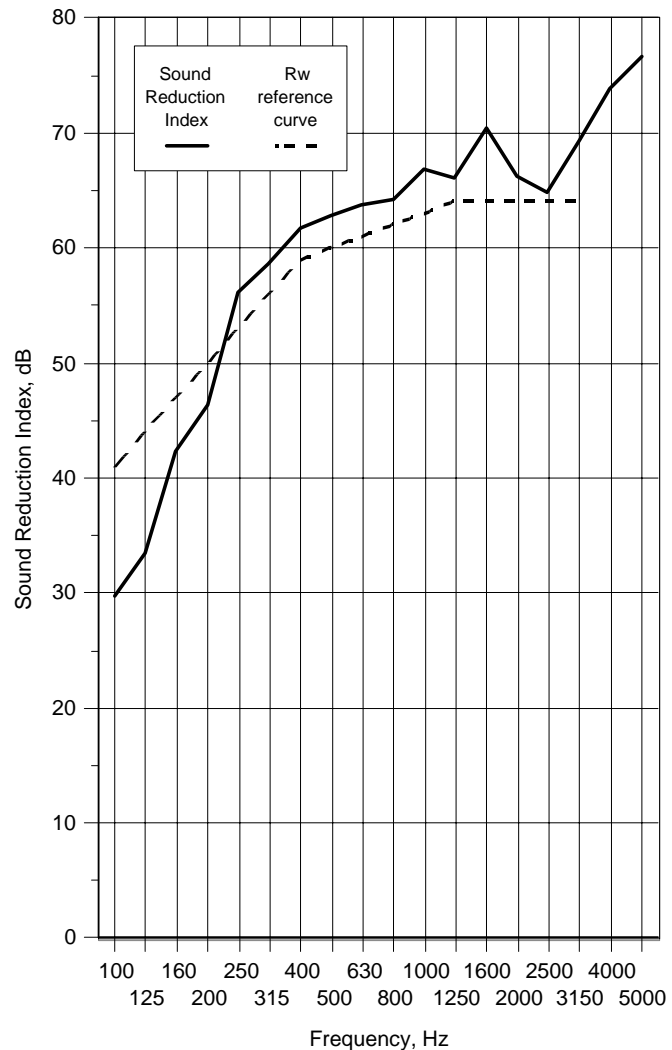
+ designates frequency beyond standard and not UKAS accredited

v1.6

Data Sheet 4

| | | | |
|------------------------|---|------------------------------|------------|
| Test Number : | 6 | Air temperature: | 13.4 °C |
| Client: | Everbuild | Air humidity: | 59 % |
| Test Date: | 15/10/2009 | Receiving room volume | 50 m3 |
| Sample height: | 2.94 m | Source room volume: | 55 m3 |
| Sample width: | 3.85 m | Sample weight: | 57.7 kg/m2 |
| Product | Wall with one hole each side of wall (not back to back) | | |
| Identification: | | | |

| Freq f Hz | Sound Reduction Index, dB | |
|---------------------|---------------------------------|---------|
| | 1/3 Oct | 1/1 Oct |
| 50+ | 24.8 | 28.5 |
| 63+ | 31.5 | |
| 80+ | 35.9 | |
| 100 | 29.7 | 32.8 |
| 125 | 33.5 | |
| 160 | 42.3 | |
| 200 | 46.3 | 50.4 |
| 250 | 56.2 | |
| 315 | 58.7 | |
| 400 | 61.8 | 62.7 |
| 500 | 62.9 | |
| 630 | 63.7 | |
| 800 | 64.3 | 65.6 |
| 1000 | 66.8 | |
| 1250 | 66.1 | |
| 1600 | 70.4 | 66.6 |
| 2000 | 66.3 | |
| 2500 | 64.8 | |
| 3150 | 69.4 | 72.3 |
| 4000 | 73.9 | |
| 5000 | 76.6 | |
| 6300+ | 75.8 | 74.5 |
| 8000+ | 75.8 | |
| 10000+ | 72.8 * | |
| Average 100-3150 | 57.7 | |



Rating according to BS EN ISO 717-1:1997

Rw(C;Ctr)= **60 (-5;-12)**dB

Notes * designates measurement corrected for background

designates limit of measurement due to background

+ designates frequency beyond standard and not UKAS accredited

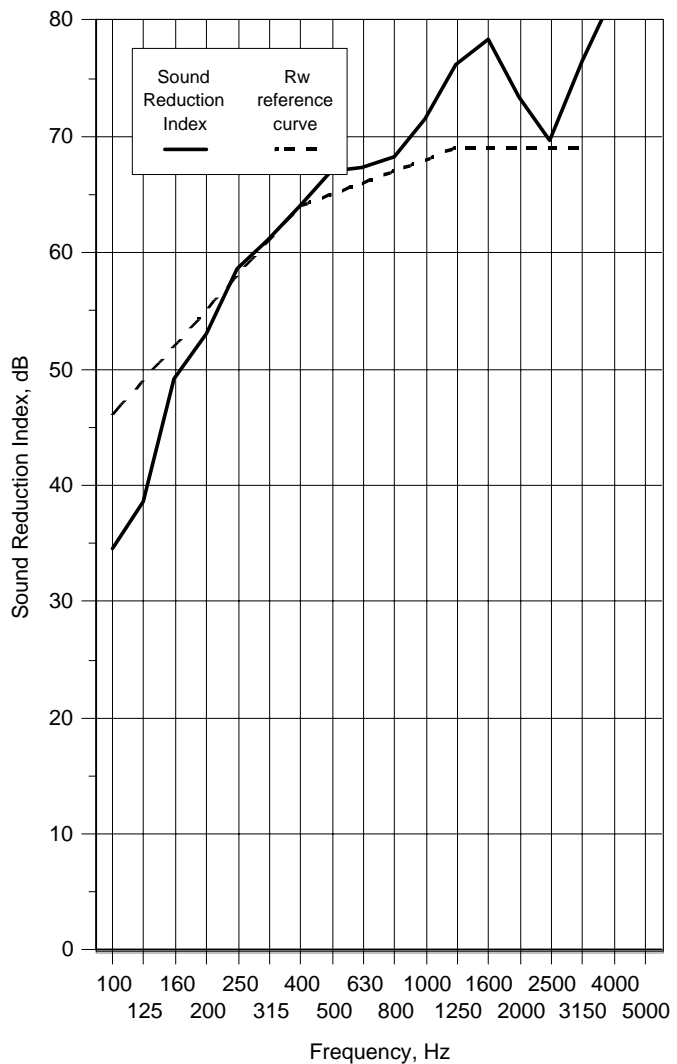
v1.6

Data Sheet 5

Test Number : 7
Client: Everbuild
Test Date: 15/10/2009
Sample height: 2.94 m
Sample width: 3.85 m
Product Identification: Wall with one socket+putty pad each side of wall (not back to back)

Air temperature: 13.5 °C
Air humidity: 60 %
Receiving room volume: 50 m³
Source room volume: 55 m³
Sample weight: 57.7 kg/m²

| Freq f Hz | Sound Reduction Index, dB | |
|---------------------|---------------------------------|---------|
| | 1/3 Oct | 1/1 Oct |
| 50+ | 25.3 | 29.3 |
| 63+ | 33.2 | |
| 80+ | 38.6 | |
| 100 | 34.5 | 37.7 |
| 125 | 38.6 | |
| 160 | 49.1 | 56.3 |
| 200 | 53.1 | |
| 250 | 58.7 | |
| 315 | 61.2 | 65.8 |
| 400 | 64.0 | |
| 500 | 67.0 | |
| 630 | 67.4 | 70.9 |
| 800 | 68.2 | |
| 1000 | 71.6 | |
| 1250 | 76.2 | 72.6 |
| 1600 | 78.3 | |
| 2000 | 73.4 | |
| 2500 | 69.7 | 79.9 |
| 3150 | 76.5 | |
| 4000 | 82.1 | |
| 5000 | 87.7 | 77.6 |
| 6300+ | 92.3 | |
| 8000+ | 82.2 * | |
| 10000+ | 73.4 * | |
| Average 100-3150 | 63.0 | |



Rating according to BS EN ISO 717-1:1997

Rw(C;Ctr)= **65 (-5;-12)**dB

Notes * designates measurement corrected for background

designates limit of measurement due to background

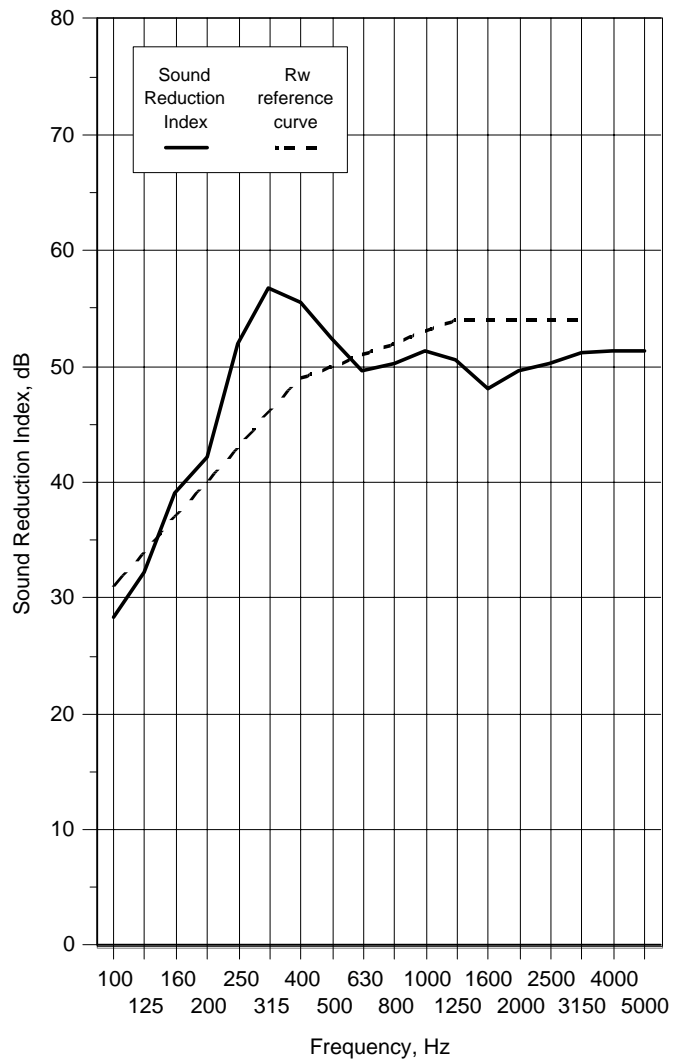
+ designates frequency beyond standard and not UKAS accredited

v1.6

Data Sheet 6

| | | | |
|------------------------|---|------------------------------|------------|
| Test Number : | 8 | Air temperature: | 13.6 °C |
| Client: | Everbuild | Air humidity: | 61 % |
| Test Date: | 15/10/2009 | Receiving room volume | 50 m3 |
| Sample height: | 2.94 m | Source room volume: | 55 m3 |
| Sample width: | 3.85 m | Sample weight: | 57.7 kg/m2 |
| Product | Wall with two holes on receive side of wall | | |
| Identification: | One hole on source side of wall. (Two holes back to back) | | |

| Freq f Hz | Sound Reduction Index, dB | |
|---------------------|---------------------------------|---------|
| | 1/3 Oct | 1/1 Oct |
| 50+ | 23.6 | 27.4 |
| 63+ | 30.7 | |
| 80+ | 34.9 | |
| 100 | 28.3 | 31.4 |
| 125 | 32.3 | |
| 160 | 39.1 | |
| 200 | 42.1 | 46.3 |
| 250 | 51.9 | |
| 315 | 56.7 | |
| 400 | 55.6 | 51.9 |
| 500 | 52.4 | |
| 630 | 49.6 | |
| 800 | 50.2 | 50.7 |
| 1000 | 51.4 | |
| 1250 | 50.6 | |
| 1600 | 48.0 | 49.2 |
| 2000 | 49.6 | |
| 2500 | 50.2 | |
| 3150 | 51.2 | 51.2 |
| 4000 | 51.3 | |
| 5000 | 51.3 | |
| 6300+ | 54.0 | 53.9 |
| 8000+ | 53.3 | |
| 10000+ | 54.6 | |
| Average 100-3150 | 47.5 | |



Rating according to BS EN ISO 717-1:1997

Rw(C;Ctr)= **50 (-1;-5) dB**

Notes * designates measurement corrected for background

designates limit of measurement due to background

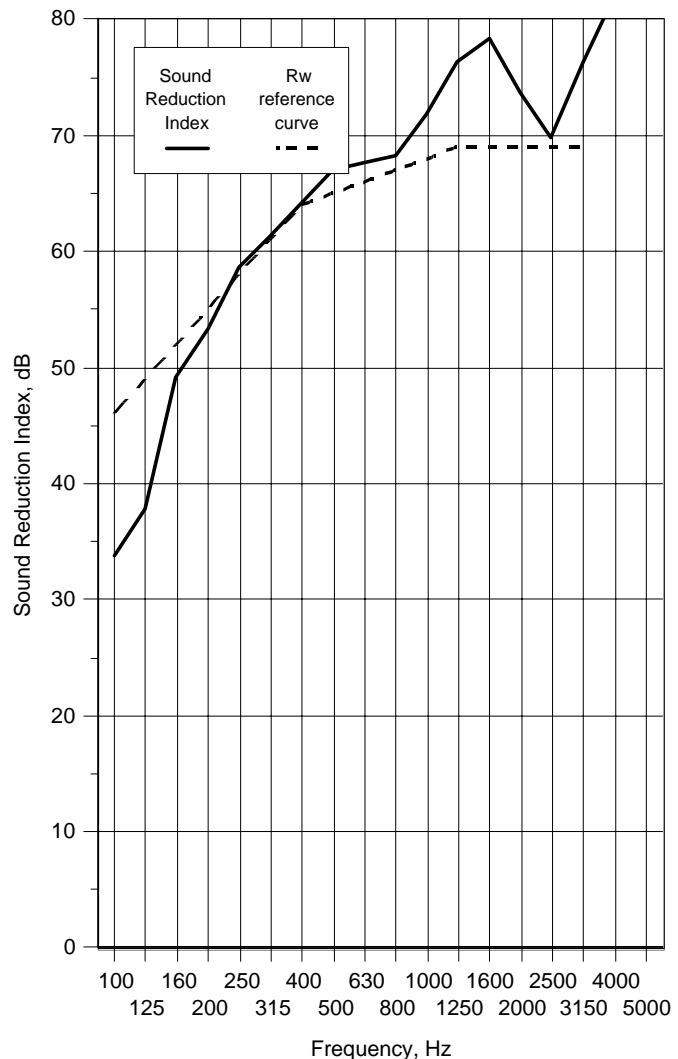
+ designates frequency beyond standard and not UKAS accredited

v1.6

Data Sheet 7

| | | | |
|------------------------|---|------------------------------|------------------------|
| Test Number : | 9 | Air temperature: | 13.7 °C |
| Client: | Everbuild | Air humidity: | 62 % |
| Test Date: | 15/10/2009 | Receiving room volume | 50 m ³ |
| Sample height: | 2.94 m | Source room volume: | 55 m ³ |
| Sample width: | 3.85 m | Sample weight: | 57.7 kg/m ² |
| Product | Wall with two sockets+putty pads on receive side of wall | | |
| Identification: | One socket+putty pad on source side of wall. (Two back to back) | | |

| Freq f Hz | Sound Reduction Index, dB | |
|---------------------|---------------------------------|---------|
| | 1/3 Oct | 1/1 Oct |
| 50+ | 25.5 | 29.5 |
| 63+ | 33.6 | |
| 80+ | 38.4 | |
| 100 | 33.8 | 37.1 |
| 125 | 37.9 | |
| 160 | 49.2 | |
| 200 | 53.3 | 56.5 |
| 250 | 58.7 | |
| 315 | 61.3 | |
| 400 | 64.3 | 66.1 |
| 500 | 67.1 | |
| 630 | 67.6 | |
| 800 | 68.3 | 71.0 |
| 1000 | 71.8 | |
| 1250 | 76.4 | |
| 1600 | 78.4 | 72.7 |
| 2000 | 73.7 | |
| 2500 | 69.8 | |
| 3150 | 76.4 | 79.8 |
| 4000 | 82.0 | |
| 5000 | 87.5 | |
| 6300+ | 92.2 | 77.9 |
| 8000+ | 82.7 * | |
| 10000+ | 73.7 * | |
| Average 100-3150 | 63.0 | |



Rating according to BS EN ISO 717-1:1997

Rw(C;Ctr)= **65 (-6;-13)**dB

Notes * designates measurement corrected for background

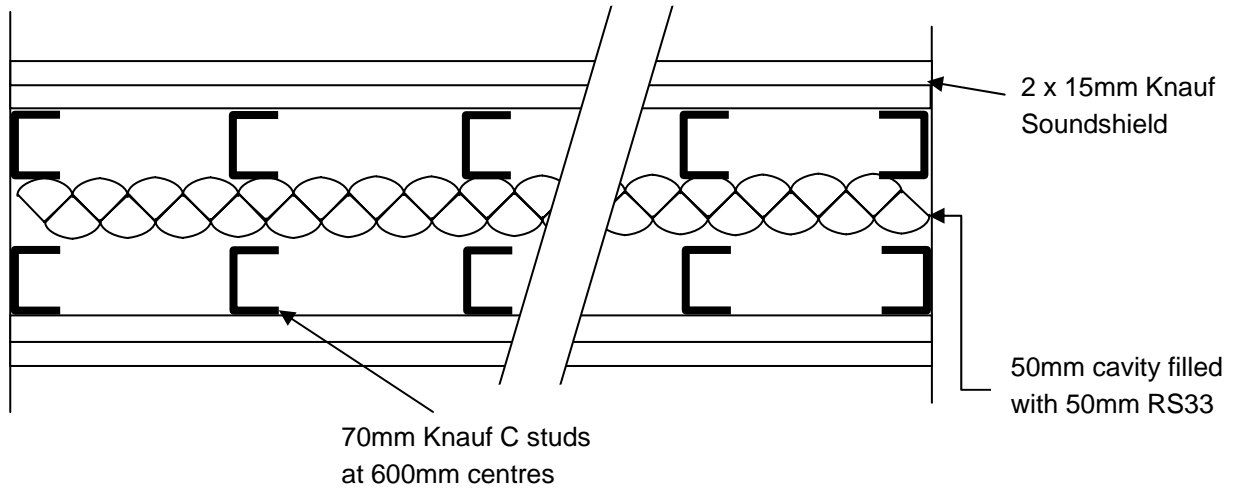
designates limit of measurement due to background

+ designates frequency beyond standard and not UKAS accredited

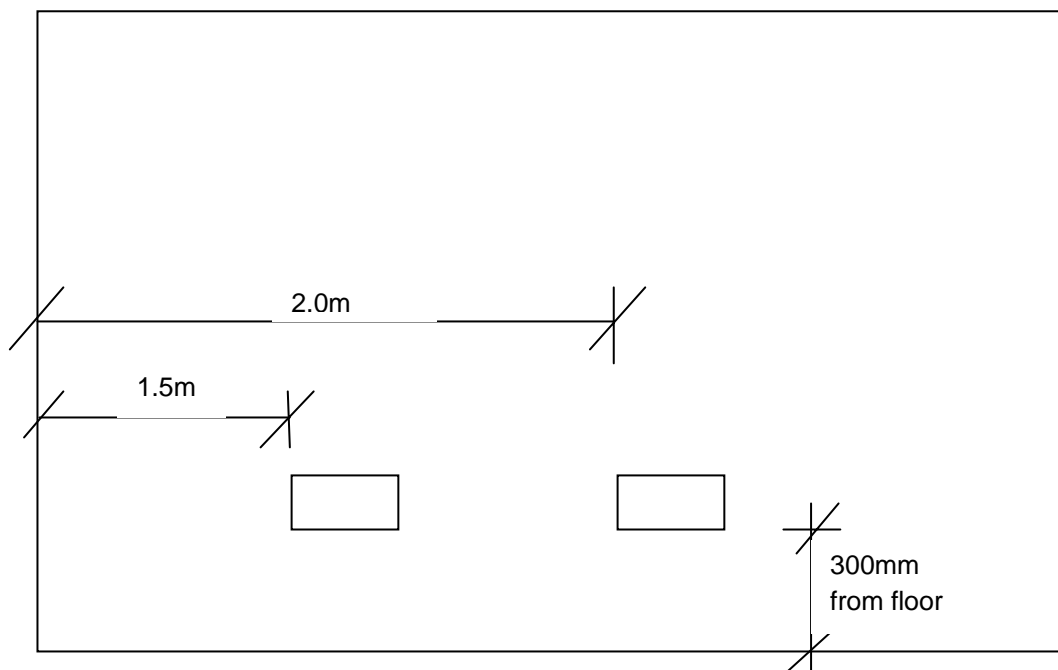
v1.6

Diagram 1

Section through wall



Location of sockets/holes in wall



NOT TO SCALE

Appendix 1

Test Procedure

Measurement of Sound Transmission in accordance with BS EN ISO 140-3 : 1995 - TP15

In the laboratory, airborne sound transmission is determined from the difference in sound pressure levels measured across a test sample installed between two reverberant rooms. The difference in measured sound pressure levels is corrected for the amount of absorption in the receiving room. The test is done under conditions which restrict the transmission of sound by paths other than directly through the sample. The source sound field is randomly incident on the sample.

The test sample forms the whole of a 3.9m wide x 2.9m high dividing wall between the two rectangular reverberant rooms, both of which are constructed from 215mm brick with reinforced concrete floors and roofs.

One of the rooms is used as the receiving room and has a volume of 50 cubic metres. It is isolated from the surrounding structure and the adjoining room by the use of resilient mountings and seals ensuring good acoustic isolation. The adjoining source room has a volume of 55 cubic metres.

Broad band noise is produced in the source room from an electronic generator, power amplifier and loudspeaker. The resulting sound pressure levels in both rooms are sampled using a microphone mounted on an oscillating boom and connected to a real time analyser. The signal is filtered into one third octave band widths, integrated and averaged. The value obtained at each frequency is known as the average sound pressure level for either the source or the receiving room. The change in level across the test sample is termed the sound pressure level difference, i.e.

$$D = L_1 - L_2$$

where

D is the equivalent Sound Pressure level difference in dB

L_1 is the equivalent Sound Pressure level in the source room in dB

L_2 is the equivalent Sound Pressure level in the receiving room in dB

The Sound Reduction Index (R) also known by the American terminology Sound Transmission Loss, is defined as the number of decibels by which sound energy randomly incident on the test sample, is reduced in transmitting through it and is given by the formula:

$$R = D + 10\log_{10} \frac{S}{A} \dots \text{in decibels}$$

Where

S is the area of the sample

A is the total absorption in the receiving room

both dimensions being in consistent units

The Sound Reduction Index is an expression of the laboratory sound transmission performance of a particular element or construction. It is a function of the mass, thickness, sealing method of mounting etc. and is independent of the overall area of the sample.

However, when an example of this construction is installed on site, the sound insulation obtained will depend upon its surface area, as well as the absorption in the receiving room. The larger the area the greater the sound energy transmitted. Also, the overall sound insulation is affected by the sound transmission through other building elements, some of which may have an inferior performance to the sample tested. In practice, therefore, the potential sound reduction index of a construction is not fully realised on site. Furthermore, the sound reduction index of a particular sample of that construction can only be measured accurately in a laboratory, because only under such controlled conditions can the sound transmission path be limited to the sample under test.

R_w , C and C_{tr} have been calculated in accordance with the relevant section of BS EN ISO 717-1 :1997 from the results of laboratory tests carried out in accordance with BS EN ISO 140-3 : 1995.

Appendix 2

Measurement Uncertainty BS EN ISO 140-3:1995 - TP15

The following values of uncertainty are based on a standard uncertainty multiplied by a coverage factor of $k = 2$, which provides a level of confidence of approximately 95%.

| Frequency, Hz | Uncertainty, \pm dB |
|---------------|-----------------------|
| 100 | 2.6 |
| 125 | 2.4 |
| 160 | 2.1 |
| 200 | 2.1 |
| 250 | 1.5 |
| 315 | 1.5 |
| 400 | 1.2 |
| 500 | 1.2 |
| 800 | 1.0 |
| 1000 | 1.0 |
| 1250 | 1.0 |
| 1600 | 1.0 |
| 2000 | 1.0 |
| 2500 | 1.0 |
| 3150 | 1.0 |



Sound Research Laboratories Limited

Registered Address:

Holbrook House
Little Waldingfield
Sudbury
Suffolk
CO10 0TH

Registered Number: 907694 England

Tel: 01787 247595

Fax: 01787 248420

Website: www.soundresearch.co.uk

e.mail: srl@soundresearch.co.uk

SRL offers services in:

Acoustics
Laboratory and Site Testing
Fire
BREEAM
Air Tightness

SRL's Laboratory is accredited for testing under UKAS Number 0444

Member of the Association of Noise Consultants
Investors in People Accreditation
Robust Details Appointed Inspectors
Notified Body Under Noise Directive 2000/14/EC

London Office:

70 Cowcross Street
London
EC1M 6EJ
Tel: 0207 251 3585
Fax: 0207 336 8880

Altrincham Office:

Lynnfield House
Church Street
Altrincham, Cheshire WA14 4DZ
Tel: 0161 929 5585
Fax: 0161 929 5582

Wessex Office:

Hartham Park
Corsham
Wiltshire, SN13 0RP
Tel: 01249 700205

Dubai Office (representative):

Sound Research Laboratories Consulting FZC
P.O. Box 10559
Rakfz, RAK, UAE
Tel: 00971 4 3470047
Fax 00971 4 3470824



INVESTOR IN PEOPLE